

State of Wyoming Corner Record

(In compliance with the *CORNER PERPETUATION AND FILING ACT*, Wyoming Statutes, 1977, Section 36-11-101, et. seq., and the Rules and Regulations of the Board of Registration for Professional Engineers and Professional Land Surveyors)

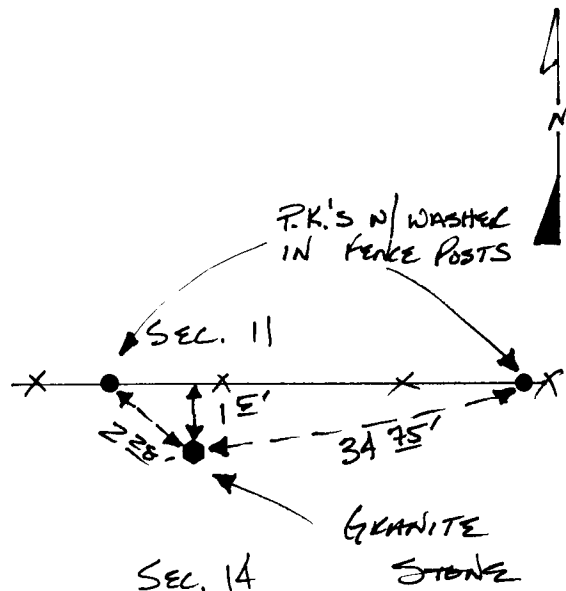
Reverse side of this form may be used if more space is needed.

Record of original survey and citation of source of historical information (if corner is lost or obliterated). Description of corner monumentation evidence found and/or monument and accessories established to perpetuate the location of this corner. Sketch of relative location of monument, accessories, and reference points with course and distance to adjacent corner(s) (if determined in this survey). Method and rationale for reestablishment of lost or obliterated corner.

- FOUND GRANITE STONE 7" x 12" x 7" EXPOSED
W/ 1/4 CHISELEN ON SOUTH FACE.

GLO RECORD: GRANITE 16" x 9" x 5"

140529
 RECEIVED
 LARAMIE COUNTY
 CHEYENNE, WY.
 94 APR 18 PM 4 45



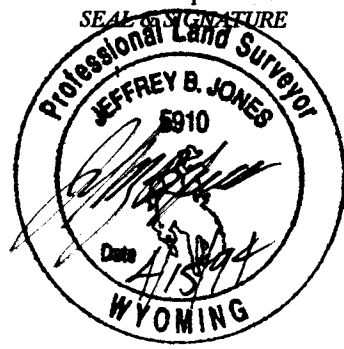
Date of Field Work: 3/94 Office Reference: 2712

CROSS INDEX DIAGRAM

A	1	2	3	4	5	6	7	8	9	10	11	12	13	14	15	16	17	18	19	20	21	22	23	24	25
B																									
C		6				5				4				3						2					1
D																									
E																									
F																									
G			7			8				9				10						11					12
H																									
J																									
K																									
L																									
M																									
N																									
O																									
P																									
Q																									
R																									
S																									
T																									
U																									
V																									
W																									
X																									
Y																									
Z																									

Firm/Agency, Address
 INTERMOUNTAIN PROFESSIONAL SERVICES, INC.
 5801 OSAGE AVENUE
 CHEYENNE WY 82001
 Telephone Number: (307) 632-3138

This corner record was prepared by me or under my direction and supervision.



Corner Name: 1/4 CORNER Section: 11/4 T 15 R 66; 6TH P.M. Cross-Index No.: J-19